



## EC TYPE EXAMINATION (MODULE B)

CERTIFICATE Nr. MED258315CS/001

*This is to certify, that RINA, specified as Notified Body N° 0474 by the Italian "Ministero delle Infrastrutture e dei Trasporti Direzione Generale per la navigazione ed il Trasporto Marittimo ed Interno" on 25 November 1998, did undertake the relevant type approval procedures for the equipment identified below which was found to be in compliance with the Fire Protection requirements of Marine Equipment Directive (MED) 96/98/EC as modified by Directive 2013/52/EU*

*MED Item N°*

**A.1/3.18a**

*Description*

**Surface materials and floor coverings with low flame-spread characteristics - (a) decorative veneers**

*Type*

**FONOSPHERA XB-10AL**

*Applicant*

**TEKCELL S.P.A.**

VIA DEL CONSORZIO 37  
60015 FALCONARA MARITTIMA (AN)  
ITALY

*Testing standards*

**IMO Res. MSC.307(88)-(2010 FTP Code)**

*Reference standards*

**Chap. II-2 and X of SOLAS 74 Convention, as amended,  
RINA Rules for the certification of Marine Equipment**

*Issued at Genoa on*  
July 31, 2015

*This Certificate is valid until*  
July 22, 2020

*This Certificate consists of this sheet plus an attachment*



**Massimo Dinale**

*RINA Services S.p.A.*



**ATTACHMENT TO  
CERTIFICATE Nr. MED258315CS/001**

**Page 1 of 2**

*Manufacturer*

**TEKCELL S.P.A.**

*Place of Manufacturer*

VIA DEL CONSORZIO 37  
60015 FALCONARA MARITTIMA (AN)  
ITALY

**Product description**

Acoustic insulating material composed of :

1<sup>st</sup> layer: cross-linked closed cells polyethylene (thickness 5 mm – mass per area 150 g/m<sup>2</sup>);

2<sup>nd</sup> layer: polymer based flame retardant product with mineral fillers;

3<sup>rd</sup> layer: polyester fibre (thickness 10 mm – mass per area 200 g/m<sup>2</sup>) covered on the external side with an aluminium foil having thickness of 0.05 mm.

**Fields of application**

As finishing material for all exposed interior and concealed or inaccessible surfaces. When intended for bulkhead and ceiling the product may be applied to any metallic support having a thickness  $\geq 0,75$  mm. When intended for deck the product may be applied to any non-combustible support, any metallic support or any material having low flame spread characteristics.

On the basis of the value of the total heat release (Qt) and on the basis of the value of the peak heat release (Qp) the material is deemed not generating excessive quantities of smoke nor toxic products in fire according to Annex 2 IMO 2010 FTO Code.

**Tests carried out**

Tests as per RINA Test Laboratory reports Nos. 2010CS012331/1 and 2010CS012331/3 issued respectively on 22 July 2010 and 21 July 2010 according to:

IMO Res. A.653(16)

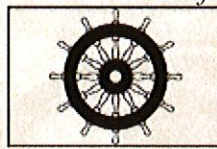
ISO 1716: 1973





**ATTACHMENT TO  
CERTIFICATE Nr. MED258315CS/001  
Page 2 of 2**

*The mark of conformity may only be affixed to the above type approved equipment and a Manufacturer's Declaration of Conformity issued when the production control phase module (D, E or F) of Annex B of the Directive is fully complied with a written inspection agreement with a Notified Body*



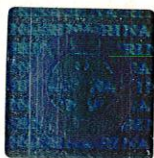
**XXXX/YY**

**"WHEELMARK FORMAT"**

XXXX    *Notified Body number undertaking surveillance module*  
YY        *Last two digits of year mark affixed*

***General conditions for the approval***

- a) The initial conditions verified by RINA at the time of the approval are to be maintained
- b) Any changes to the initial conditions are to be promptly communicated to RINA, which reserves the right to repeat the relevant assessment
- c) This certificate will no be valid if the manufacturer makes any changes or modifications to the approved equipment, which have not been notified to, and agreed with RINA
- d) RINA personnel are to be allowed to witness during the performances of activities, upon their request
- e) The activities are to be carried out in compliance with the RINA Rules and/or other applicable Rules
- f) Should the specified regulations or standards be amended during the validity of this certificate, the product is to be reapproved prior to it being placed on board vessels to which the amended regulations or standards apply.



**Massimo Dinale**